

3435. Asian Citrus Psyllid

State Interior Quarantine

A. Pest. A quarantine is established against the following pest, its hosts, and possible carriers: Asian Citrus Psyllid (*Diaphorina citri*).

B. Area Under Quarantine.

Imperial County: The entire county

Los Angeles County: The entire county

Orange County: The entire county

The entire County of San Diego except:

Beginning at the boundary line of San Diego County at 33.427262 latitude and -116.770375 longitude; then easterly along said boundary line to its intersection with 33.427076 latitude and -116.467260 longitude; then, southeasterly along an imaginary line to its intersection with Horse Camp Road; then, starting southwestly along said road to its intersection with De Anza Trail; then, southerly along said trail to its intersection with Cayote Way; then, westerly along said way to its intersection with Anza Park Trail; then, easterly along said trail to its intersection with Stagecoach Way; then, southerly along said way to its intersection with Borrego Springs Road; then, starting southerly along said road to its intersection with Yaqui Pass Road; then, starting southerly along said road to its intersection with State Highway 78; then, southwestly along said highway to its intersection with State Highway 79; then, starting northwestly along said highway to its intersection with an unnamed road at 33.338920 latitude and -116.719413 longitude; then starting northeasterly along said road to its intersection with the boundary line of the Cleveland National Forest; then, starting westerly along said boundary to its intersection with 33.362319 latitude and -116.719026 longitude; then, northwestly along an imaginary line to the point of beginning.

In Riverside and San Bernardino Counties: Beginning at the intersection of State Highway 2 and State Highway 138; then, starting southeasterly along State Highway 138 to its intersection with State Highway 173; then, starting easterly

along State Highway 173 to its intersection with Lake Road; then, starting northeasterly along Arrowhead Lake Road to its intersection with the boundary of Mojave River Forks Regional Park; then, starting northerly along the boundary of Mojave River Forks Regional Park to its intersection with the boundary of the San Bernardino National Forest; then, starting easterly along the boundary of the San Bernardino National Forest to its intersection with the boundary line of Riverside and San Bernardino counties at 34.033800 latitude and -116.719700 longitude; then, starting easterly along the boundary of Riverside and San Bernardino counties to its intersection with State Highway 62; then, starting southeasterly along State Highway 62 to its intersection with Dillon Road; then, starting easterly along Dillon Road to its intersection with US Interstate 10; then, starting easterly along US Interstate 10 to its intersection with 33.672844 latitude and -115.930156 longitude; then, northeasterly along an imaginary line to its intersection with the boundary line of Joshua Tree National Park at 33.685382 latitude and -115.920900 longitude; then, starting easterly along said boundary line to its intersection with 33.714508 latitude and -115.658006 longitude; then, easterly along an imaginary line to its intersection with Powerline Road and Hayfield Road; then, starting southerly along Hayfield Road to its intersection with an unnamed dirt road; then, southerly along said road to its intersection with US Interstate 10; then, starting northeasterly along said interstate to its intersection with 33.671111 latitude and -115.205269 longitude; then, southerly along an imaginary line to its intersection with the boundary line of Riverside County and The Bradshaw Trail; then, starting westerly along the boundary line of Riverside County to its intersection with the boundary line of San Bernardino County; then, starting northwestly along the boundary line of San Bernardino County to its intersection with State Highway 2; then, starting southeasterly along State Highway 2 to the point of beginning.

In Santa Barbara County: Beginning at the intersection of State Highway 154 and W Camino Cielo; then, starting northerly along W Camino Cielo to its intersection with Arroyo Burro Road; then, starting northwestly along said road to its intersection with 34.541445 latitude and -119.763379 longitude; then, northeasterly along an imaginary line to its intersection with Forest Route – 9N11 at 34.568698 latitude and -119.735980 longitude; then, starting northeasterly along said route to its intersection with an unnamed road at 34.703155 latitude and -119.652270 longitude; then, starting southerly along said road to its intersection with an unnamed road at 34.653282 latitude and -119.609705 longitude; then, starting northeasterly along said road to its intersection with an unnamed road at 34.670882 latitude and -119.521898 longitude; then, southeasterly along an imaginary line to its intersection with the boundary of Santa Barbara County at 34.656383 latitude and -119.441984 longitude; then, southerly along said boundary to its intersection with the coastline of California; then, starting northwestly along said coastline to its intersection with 34.414310 latitude and -119.780191 longitude; then, northerly along an imaginary line to its intersection with Las Olas Drive at 34.414822 latitude and -119.779819 longitude; then, northeasterly along said drive to its intersection with Las Palmas Drive; then, starting northeasterly along said drive to its intersection with US Highway 101; then, northwestly along said highway to its intersection with State Highway 154; then, starting northerly along said highway to the point of beginning.

Ventura County: The entire county

C. Articles and Commodities Covered. The following are declared to be hosts and possible carriers of *Diaphorina citri*.

1. All nursery stock, plants, plant parts, including green waste, and plant products capable of propagation, except seed extracted from fruit of:

Aegle marmelos (bael, Bengal quince, golden apple, bela, milva)
Aeglopsis chevalieri (Chevalier's aeglopsis)
Afraegle gabonensis (Gabon powder-flask)
Afraegle paniculata (Nigerian powder-flask)
Amyris madrensis
Atalantia missionis (= *Pamburus missionis*)
Atalantia monophylla (Indian atalantia)
Atalantia spp.
Balsamocitrus dawei (Uganda powder-flask)
Bergia (= *Murraya*) *koenigii* (curry leaf)
Calodendrum capense (Cape chestnut)
Choisya arizonica
Choisya ternate
X Citrocirus webberi
Citropsis articulata (Katimboro, Muboro, West African cherry orange)
Citropsis gillettiana (cherry-orange)
Citropsis schweinfurthii (African cherry-orange)
Citrus aurantiifolia (lime, Key lime, Persian lime, lima, limón agrio, limón ceuti, lima mejicana, limero)
Citrus aurantium (sour orange, Seville orange, bigarde, marmalade orange, naranja agria, naranja amarga)
Citrus hystrix (Mauritius papeda, Kaffir lime)
Citrus jambhiri (rough lemon, jambhiri-orange, limón rugoso, rugoso)
Citrus limon (lemon, limón, limonero)
Citrus madurensis (= *X Citrofortunella microcarpa*)
Citrus maxima (pummelo, pomelo, shaddock, pompelmous, toronja)
Citrus medica (citron, cidra, cidro, toronja)
Citrus meyeri (Meyer lemon, dwarf lemon)
Citrus x nobilis (king mandarin, tangor, Florida orange, King-of-Siam)
Citrus x paradisi (grapefruit, pomelo, toronja)
Citrus reticulata (mandarin, tangerine, mandarina)
Citrus sinensis (sweet orange, orange, naranja, naranja dulce)
Citrus spp.
Clausena anisum-olens (anis)
Clausena excavata (clausena)
Clausena indica (clausena)
Clausena lansium (wampi, wampee)
Clymenia polyandra (a-mulis)
Eremocitrus glauca (Australian desert lime)
Eremocitrus hybrid
Esenbeckia berlandieri
Fortunella crassifolia (Meiwa kumquat)
Fortunella margarita (Nagami kumquat, oval kumquat)
Fortunella polyandra (Malayan kumquat)
Fortunella spp.
Limonia acidissima (Indian wood apple)
Merrillia caloxylon (flowering merrillia)
Microcitrus australasica (finger-lime)
Microcitrus australis (Australian round-lime)
Microcitrus papuana (desert-lime)
X Microcitronella spp.
Murraya spp. (curry leaf, orange-jasmine, Chinese-box, naranjo jazmin)

Naringi crenulata (naringi)
Pamburus missionis (pamburus, = *Atalantia missionis*)
Poncirus trifoliata (trifoliolate orange, naranjo trébol)
Severinia buxifolia (Chinese box-orange)
Swinglea glutinosa (tabog)
Tetradium ruticarpum (evodia, wu zhu yu)
Toddalia asiatica (orange climber)
Triphasia trifolia (trifoliolate limeberry, triphasia)
Vepris (= *Toddalia*) *lanceolata* (white ironwood)
Zanthoxylum fagara (wild lime, lime prickly-ash)

2. Any other articles which are infested or exposed to infestation by *Diaphorina citri*.

3. Possible carriers shall include all appliances used in the growing, harvesting, processing and hauling of the host plants and plant parts and any green waste residues including but not limited to tractors, trailers, trucks, planting, picking and pruning equipment and processing machinery and any other article, thing or means of conveyance when it is determined by the Secretary or county agricultural commissioner to present a hazard of spreading live life stages of the *Diaphorina citri*.

4. Citrus fruit in bulk containers or bins or any citrus fruit with leaves and stems attached.

5. Exemptions. The following articles are exempt from the provisions of this subsection (Also see Appendix B):

a. Host fruit commercially cleaned, graded, and packed within the regulated area may move within or from the area;

b. Defoliated dormant bare-rooted nursery stock;

c. Defoliated dormant nursery stock in containers where all leaf litter and any weeds have been removed.

D. Restrictions.

1. Articles and commodities covered in subsection (C) (1), (2) and (4) are prohibited movement from the area under quarantine **except if** the article or commodity covered is moved under the terms of a special permit as authorized under Title 3, Section 3154 of the California Code of Regulations.

2. Articles and commodities covered in subsection (C)(3) are prohibited movement from the area under quarantine except if cleaned and/or treated in a manner to eliminate all live life stages of *Diaphorina citri* to the satisfaction of the Department or county agricultural commissioner.

3. Articles or commodities originating outside the quarantine area may be moved directly through the area under quarantine without delay and by a direct route in an enclosed vehicle or container or completely enclosed by a covering to prevent exposure to the *Diaphorina citri* while enroute through the area.

4. All nursery stock sold or distributed within the quarantine area shall be treated in a manner approved by the Department and bear a label stating that it may not be moved outside the quarantine area.

ADDITIONAL QUARANTINE INFORMATION

APPENDIX A

09-23-10

Citrus fruit in bulk containers or bins may move from the ACP quarantine area under the terms of a special permit (QC 1255) authorized under Title 3, Section 3154 of the California Code of Regulations.

APPENDIX B

09-23-10

Under QC Master Permit 1255, all citrus fruit must be subjected to a process to wash and/or remove leaf and stem debris.

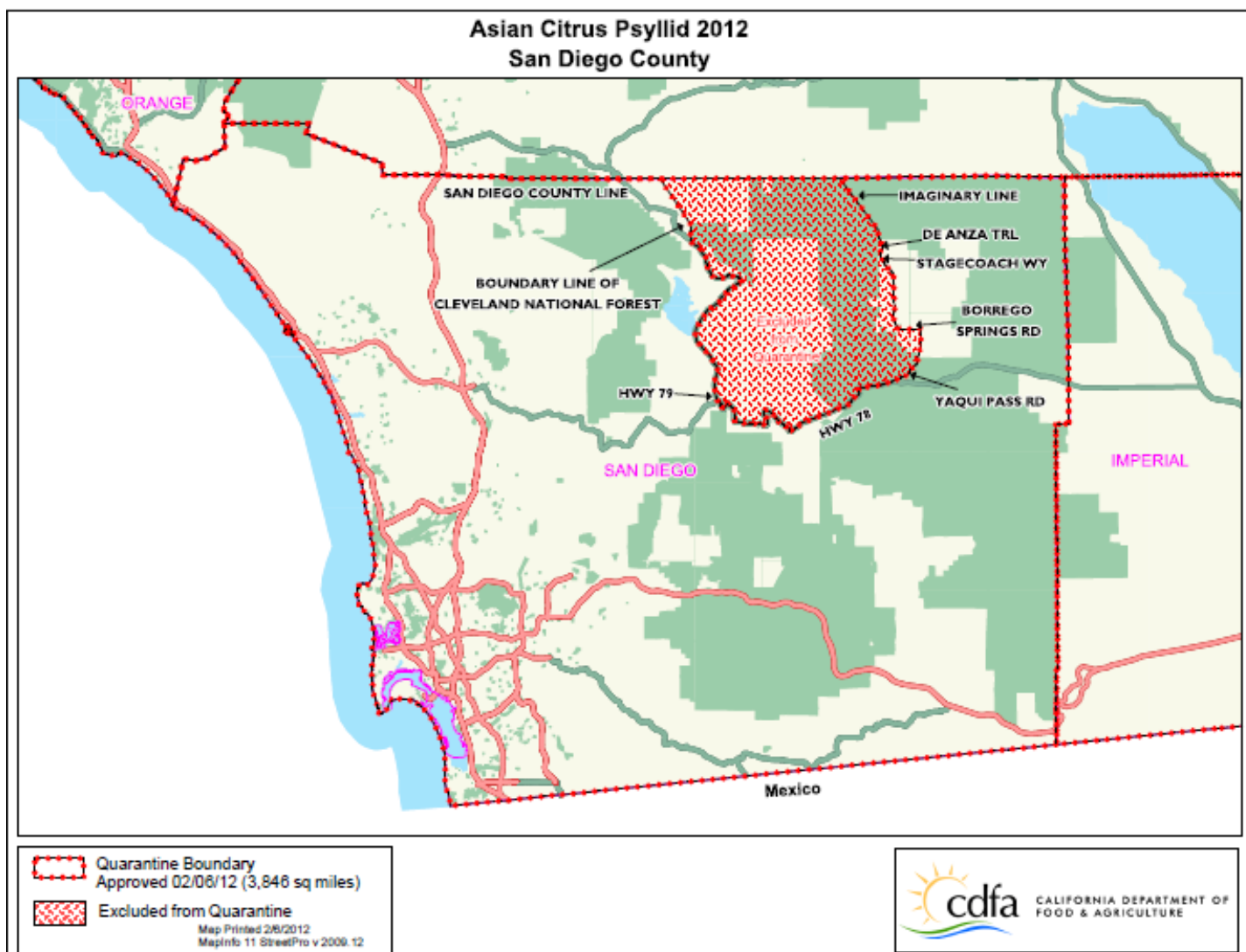
APPENDIX C

12-27-10

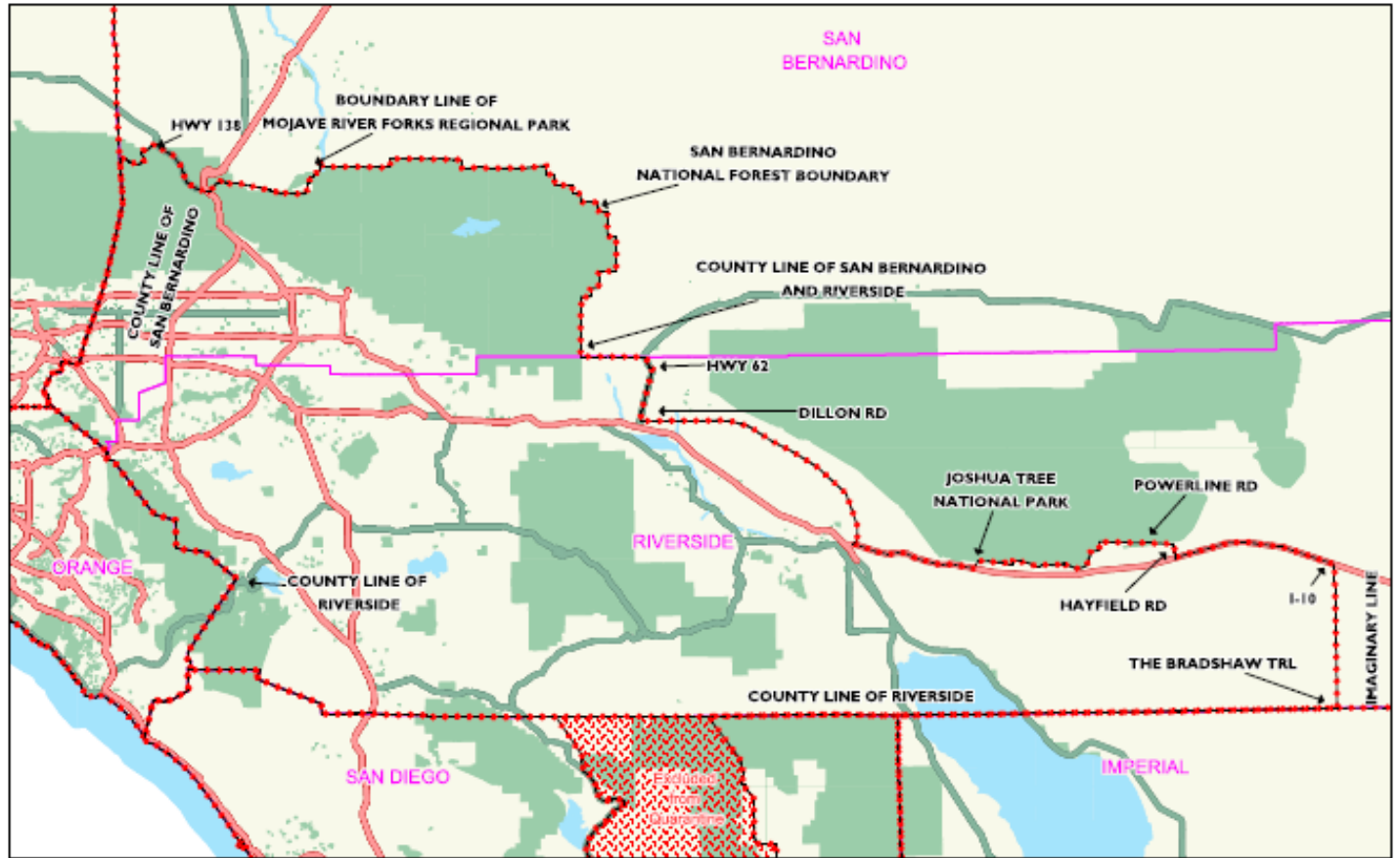
Under QC Master Permit 1306, processed ACP host material may move intrastate if processed in an approved manner that eliminates the risk of any live life stage of *Diaphorina citri*.


Processed ACP host material must be accompanied by a certificate that states:


“Processed Verification Statement: I have inspected the processed products identified above and determined that they no longer present a risk of spreading ACP.”



Asian Citrus Psyllid 2012 San Bernardino & Riverside Counties



 Quarantine Boundary
Approved 02/06/12 (5,332 sq miles)

 Excluded from Quarantine

Map Printed 2/6/2012
MapInfo 11 StreetPro v 2009.12



